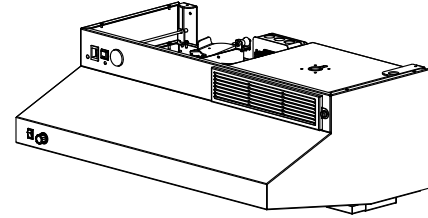


Automatic Fire Suppression Range Hood Model CV-FE



Introducing a new range hood system that brings commercial fire suppression technology to residential application. Cooksafe is the world's safest in-home range hood.

Features

- Pre-engineered unit designed for residential use
- Stainless Steel construction, brushed finish
- Wet chemical solution extinguishes fire and prevents reignition
- Independent, dual activation; automatic (fusible links) and remote pull switch (optional)
- Energy to the range is automatically cut off (electric switch) once high temperature is reached
- Removable grease filter and trap for easy cleaning
- Gauge for visual inspection of canister pressure
- Non-ducted design
- Replacable media filters for recirculated air
- Shatter proof 60W light bulb illuminates range top
- Permanently lubricated fan meets UL507 standards, infinitely variable speed control
- ETL listed to UL300A and UL 507 test standards
- NSF approved
- Can be wired into fire alarm system, local or remote
- Installed and serviced by authorized distributors

Specifications

Volts	115
Hz	60
Amps	5
Fan Control	Inf. Var.
Light Bulb	60A15/TF
Typ. cfm	250
Gas cutoff valve	N/A
Elec. cutoff	50A-208VAC Relay



CookSafe LLC

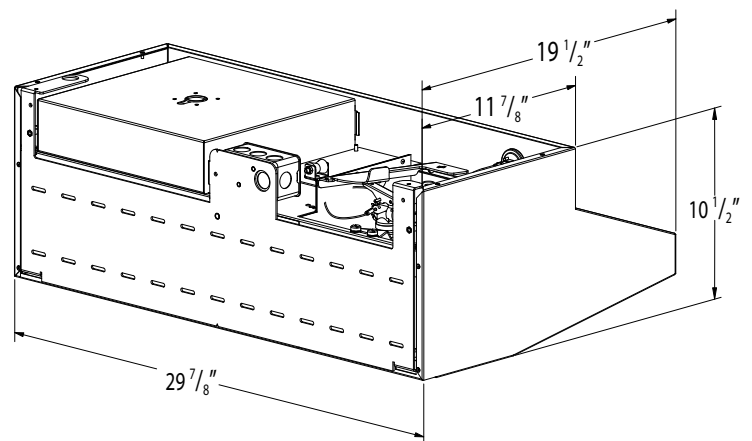
20 Denlar Dr. Chester, CT

www.cooksafe.com

860-526-9846

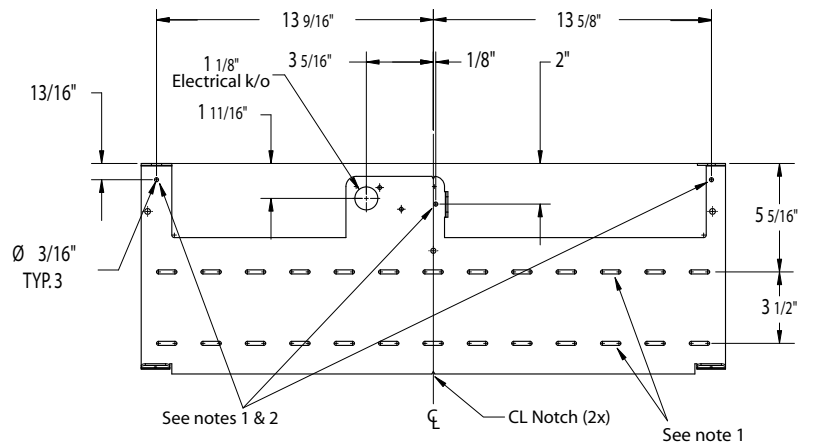
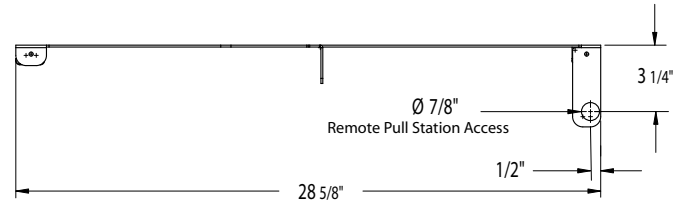
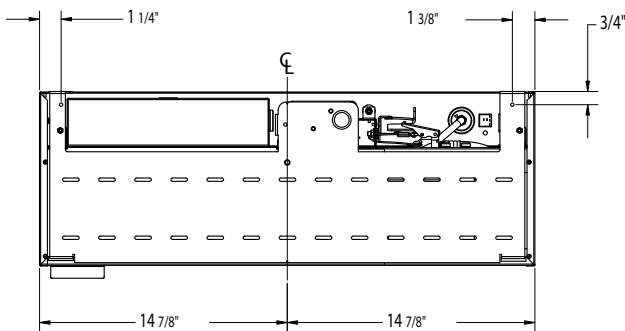
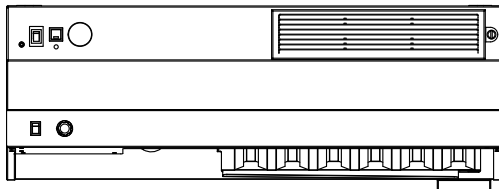
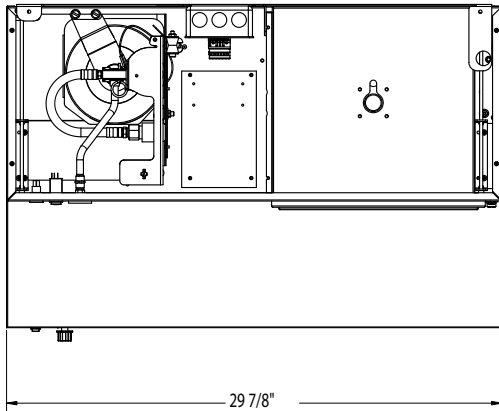
Typical Specifications

- Range hood shall be CookSafe CV Series
- Unit shall be an under cabinet mount
- Unit will be of stainless steel construction (18 & 20 Ga. #4 polished 304) with no sharp edges and a brushed finish
- Hood will be a non-ducted unit. Unit will have replacable media odor filters to trap grease and particulates before recirculating the air
- Unit shall have centrifugal fan with air delivery of 250 cfm. Fan speed will be controlled by an infinitely variable switch
- Suppression activation will be by two independent methods; automatic (fusible links) and remote pull station (optional)
- Extinguishing Agent: potassium carbonate solution in a pressurized cylinder
- Unit to be ETL listed to UL300A and UL507 test standards. Fan motor to be permanently lubricated and meet UL507 standards. Unit shall be NSF approved
- Unit shall automatically disconnect range energy once a certain, pre-set temperature is reached, via gas valve or electric relay
- Unit shall be mounted so that the bottom of the mounting bracket sits 18"-26" above the stovetop



Reference	Qty.	Remarks	Project
			Location
			Architect
			Engineer
			Contractor
			Submitted by
			Date

Mounting Bracket



Note 1: Use #8 or #10 flathead drywall or wood screw; Secure to stud or backing if possible, otherwise use drywall anchor

Note 2: Top three mounting holes are critical, the mounting plate must be secured with these holes

CookSafe LLC

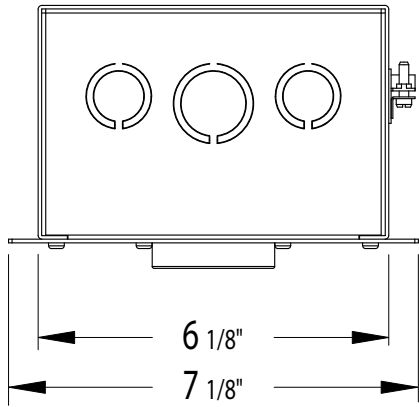
20 Denlar Dr. Chester, CT

www.cooksafe.com

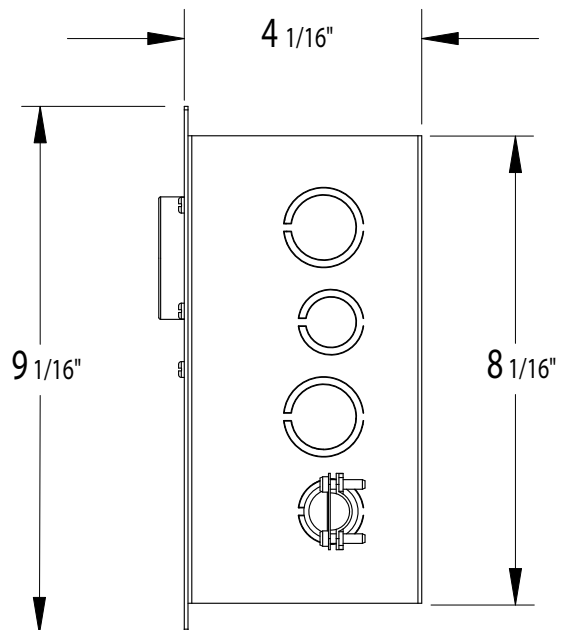
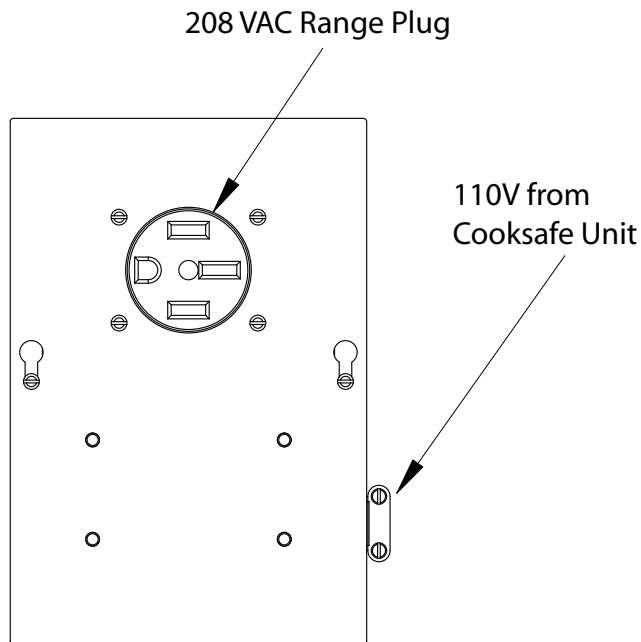
860-526-9846

Reference	Qty.	Remarks	Project
			Location
			Architect
			Engineer
			Contractor
			Submitted by
			Date

Electrical Relay Switch Box



Note: Box is designed for recessed fit into 2x4 studded wall



CookSafe LLC

20 Denlar Dr. Chester, CT

www.cooksafe.com

860-526-9846

Reference	Qty.	Remarks	Project
			Location
			Architect
			Engineer
			Contractor
			Submitted by
			Date